



## Winter 2022 Programs

### Museum Hours

*Walk-Ins are welcome!*

Tuesday – Saturday 10 a.m. to 5 p.m.

Sunday 12 p.m. to 4 p.m.

The Museum is closed on Mondays.

### Holiday Hours

December 24, 10 a.m. to 2 p.m., December 31, 10 a.m. to 4 p.m.

Closed Christmas Day, and New Year's Day.

In accordance with the State of Illinois guidelines face coverings are required in the Museum.

Visit us and shop online at [lizzadromuseum.org](http://lizzadromuseum.org)

1220 Kensington Road, Oak Brook, Illinois 60523  
630-833-1616 | [info@lizzadromuseum.org](mailto:info@lizzadromuseum.org)

**Arts DuPage** **DuPage Foundation**

Arts DuPage an initiative of DuPage Foundation  
COVID-19 Response Fund grant.



*This program is partially supported by  
a grant from the Illinois Arts Council Agency.*

### Admission

\$10.00 Adults, \$8.00 Seniors

\$5 Students, Teenagers, Children 7-12

Free for children under 7 yrs.

Wednesday is Free Day.

Members of the Lizzadro Museum and active members of the Armed Forces are admitted free of charge any day the Museum is open to the public.

### Accessibility

The Museum has facilities to provide access for physically disabled visitors.

### Volunteering

Volunteering forms are available online.



[@lizzadromuseum](https://www.instagram.com/lizzadromuseum)

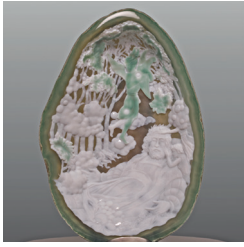
*The Lizzadro Museum Free Day  
is sponsored by:*



**Wealth  
Management**



**Smithsonian**  
Affiliate



### *Special Exhibit*

#### **The Artful Soul of Faust** *continues through April 16, 2022*

The legendary story of Faust is told in fourteen large cameos carved by Dieter and Andreas Roth. The collection was carved from 2007 to 2013 at the Roth-Cameo studio in Idar-Oberstein, Germany. The Lizzadro Museum is the first to premiere this exhibit in the United States.

*Regular Museum Admission – Regular Museum Hours*

## Lizzadro Museum Programs

### January through March 2022



#### **Saturday January 8 Start Your Rockin' Collection**

Create your very own, personalized rock collection! Bring your own egg cartons to repurpose into a collection box! Decoration materials will be provided, and each child can choose several rocks, minerals, and fossils to start or fill in their collection carton. Rocks from home can also be brought in for identification.

*10:30 a.m. & 2:00 p.m. – 30-minutes – Ages 5 yrs. & up*

*Limited class size – All visitors will be required to wear a face covering during the program*

*\$5 per child – Adults and Seniors Regular Admission – Museum Members Free*

*Register for classes on our website: [www.lizzadromuseum.org](http://www.lizzadromuseum.org)*



#### **Saturday January 15 Exploring Gemstones**

Gem materials have always fascinated human beings. Today, gemstones represent wealth, social status, and self-expression. The study of gemology provides an understanding of these fascinating objects. Join Dr. Cigdem Lule as she introduces the fundamentals of gemology.

*In-person Lecture 2:00 p.m. – 60 minutes – Ages 12 yrs. & up – Face Coverings are Required*

*Regular Museum Admission – Museum Members Free – Register at [www.lizzadromuseum.org](http://www.lizzadromuseum.org)*



#### **West Suburban Lapidary Club – Every 4<sup>th</sup> Saturday Beginning January 22**

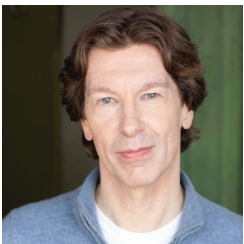
Interested in the lapidary arts? Find out more at the WSLC meetings at the Museum. The Club will host a program each month, including presentations, demonstrations, and information on cutting and polishing stones! Monthly programs to be announced.

*Every fourth Saturday of the month – First meeting January 22<sup>nd</sup>: Open House*

*Teens to Adults Welcome – Club Meeting at 1:00 p.m., Program at 2:00 p.m. – 60 minutes*

*Regular Admission – WSLC Members & Museum Members Free*

*Face coverings are required - Register on our website: [www.lizzadromuseum.org](http://www.lizzadromuseum.org)*



#### **Sunday January 23 Faust Live!**

Actor Nick Sandys presents a variety of excerpts from literary interpretations of Faust. From Goethe's play to modern monologues, the story of Faust has been reimagined by writers through the centuries.

*In-person Presentation – 2:00 p.m. – 45 minute performance.*

*Ages 8 yrs. & up – Limited Capacity Reservations Required - Face Coverings are Required*

*Regular Museum Admission – Museum Members Free – Register at [www.lizzadromuseum.org](http://www.lizzadromuseum.org)*



#### **Rock and Mineral Identification**

Geologist Sara Kurth teaches the techniques for rock and mineral identification. All materials are included for identification of 9 specimens in individual kits. After the class, tour the Museum and complete a scavenger hunt. Completes the earth science badges for Cub and Boy Scouts.

*Classes: January 29 and February 19 - 10:30 a.m. – 75-minutes – Ages 8 yrs. & up*

*Face covering are required - Reservations Required – Sign up online: [www.lizzadromuseum.org](http://www.lizzadromuseum.org)*

*\$20 per person includes the Identification Kit – Museum Members Receive 10% Discount with their code*



### Rockin' Jewelry for Kids

Children can make their own gemstone jewelry with the Rockin' Jewelry for kids. Learn to make a necklace, a keychain, and a pin. All materials included in individual kits. After the class, tour the Museum and complete a scavenger hunt. Completes the Jewelry Badge for Girl Scouts.

*Classes: January 29 and February 19 - 1:30 p.m. - 45-minutes - Ages 8 yrs. & up*

*Face covering are required - Reservations Required - Sign up online: [www.lizzadromuseum.org](http://www.lizzadromuseum.org)*

*\$15 per person includes the Jewelry Kit - Museum Members Receive 10% Discount with their code*



### Saturday February 5 Hidden Meanings, Rhymes & Wordplay, Part 2

The Museum's magnificent Imperial Screen is covered both front and back with a myriad of auspicious symbols depicting birds, plants, and objects. Because the Chinese language has so many words that share the same pronunciation these auspicious symbols can be combined into visual word plays, or rebuses. Join Dr. Richard Pegg to decipher the back of the Screen and unlock the visual puzzles.

*In-person Lecture 10:30 a.m. - 60 minutes - Ages 12 yrs. & up - Face coverings are required*

*Regular Museum Admission - Museum Members Free - Register at [www.lizzadromuseum.org](http://www.lizzadromuseum.org)*



### Pop-up Concerts Every 1<sup>st</sup> Sunday Beginning February 6

The Museum collaborates with Elmhurst Symphony Orchestra musicians presenting live concerts with a variety of music from Classical to Modern. Music themes to be announced each month. Each session will include a brief discussion about the music.

*Concert dates: February 6, March 6, and April 3 - 2:00 p.m. - 45-minutes*

*All Ages Welcome - Limited Capacity - Face coverings are required*

*Regular Museum Admission - Museum Members Free - Register at [www.lizzadromuseum.org](http://www.lizzadromuseum.org)*



### Saturday March 5 The Woman Who Changed Geology

Mary Anning, the first female fossilist, will visit the Museum to discuss her life and times, while discovering some of the first dinosaur-age fossils. This living history presentation will include real fossils to see and touch, puzzles, fossil making, and giveaways!

*Reservations not required*

*On-going Activities - 10:00 a.m. to 4:00 p.m. - All Ages Welcome - Face coverings are required*

*\$5 per child - Adults and Seniors Regular Admission - Museum Members Free*



### Saturday March 19 Metal Art Jewelry

Degreed Metalsmith and Contemporary Jewelry Artist Venus Cramer teaches the art of simple metalworking. Learn techniques and work with various hand tools to create several "make and take" finished jewelry projects. Materials and tools provided.

*Workshop - 10:30 a.m. - 90 minutes - Ages 12 yrs. & up - Face coverings are required*

*\$15.00 per person - Museum Members Receive 10% Discount with their code*

*Reservations Required - Register at [www.lizzadromuseum.org](http://www.lizzadromuseum.org)*



### Saturday April 2 Mazon Creek Fossil Trip

Join us on a trip to Braidwood, Illinois to collect Mazon Creek fossils at selected sites within the historic coal strip mining area (conditions permitting). Learn what to look for when collecting these special fossils and how to open them. Travel by motor coach, bring a sack lunch and get ready to collect. Make reservations early, this field trip fills up fast!

*Field Trip - 9:00 a.m. to 3:00 p.m. - Ages 8 yrs. to Adult - Face coverings are required on the bus*

*Fee: \$45.00 per person - Museum Members \$40.00*

*Reservations Required - Sign up online: [www.lizzadromuseum.org](http://www.lizzadromuseum.org)*



# Mary Anning: The Woman Who Changed Geology

By Sara Kurth

*She sells seashells at the seashore.* This popular tongue twister may very well be about little known fossilist, Mary Anning. Mary, born in 1799, was, for all intents and purposes, a nobody. But to geologists, and specifically, women geologists, she is a pioneer.

Mary was born in the town of Lyme Regis, England, which sits on the coast of Dorset and is the center of what is later to be dubbed the “Jurassic Coast.” The blue/gray cliffs of limestone and shale are some of the most unstable beaches in England, susceptible to the changing tides and frequent storms that inundate the area. The battle of sea and land provides ample opportunity for erosion – and ultimately the unveiling of fossils.



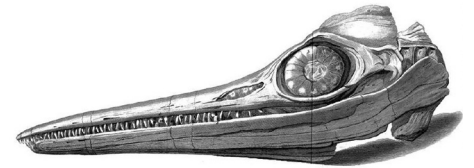
*An ammonite, similar to the ones Mary found on the beaches of Lyme Regis.*

(Image By I. Masur)

As a poor carpenter, Mary’s father hunted fossils for extra money. Around the age of 6, he began taking her out to hunt for fossils, an activity not common for girls during this era. He taught her all she needed to know about fossil collection and preparation. Her father unexpectedly died when Mary was 11 years old, leaving massive debts and forcing the entire family to work. Although she loved school, after the death of her father, Mary could no longer attend and often sought odd jobs. Unhappy with that prospect, she decided to return to the beach and search for fossils. On her first solo trip after her father’s passing, she found a “snakestone,” what later would be termed an ammonite. A well-to-do lady bought the ammonite from her, thus sparking her new “career” – seashell seller!

Occasionally, her brother would join her on the beach. One fateful day in 1811, he discovered what he and Mary believed to be a crocodile’s head. It took Mary another year and many more storms, to find the rest of the body. Once fully unearthed, the complete skeleton

measured 17-feet long with a 4-foot skull - the first complete skeleton of its kind ever found. This resulted in a slew of new questions for the scientific community as it was obviously not a crocodile. Eventually this new species was named – ichthyosaur or “fish lizard.” Mary continued to probe the cliffs of Lyme Regis and found many more ichthyosaurs, as well as another new species, the plesiosaur.



*Mary’s drawing of her first Ichthyosaur.*



*A portrait of Mary Anning and her loyal dog Trey. Natural History Museum, London.*

Her ability to find these fossils brought many scientists to the cliffs to search for fossils themselves, or more often, to utilize Mary’s keen ability to find and prepare the fossils. Unfortunately, women were not allowed to join the Geological Society of London and all her finds were sold to men who took credit for the finds instead. One scientist, William Buckland, was one of the few who gave Mary the credit she was due. But Mary would never be inducted into the Society or given credit for her work until well after her death.

Today, Mary Anning’s name is becoming more well-known. Her contribution to the field of paleontology is unprecedented. On March 5<sup>th</sup> the Museum is hosting a living history presentation featuring Mary Anning. A character interpretation will describe her life, along with other activities for children and adults to learn about fossils, as well as this remarkable woman’s achievements.



*One of the many Ichthyosaurs discovered by Mary Anning.*

**For more information about Mary Anning, check out these books:**

## **Adult books:**

The Fossil Hunter: Dinosaurs, Evolution, and the Woman Whose Discoveries Changed the World by Shelley Emling.

The Fossil Woman: A Life of Mary Anning by Tom Sharpe.

Remarkable Creatures by Tracy Chevalier (a novel about Mary Anning and her friend Mary Philpot).

## **Kids books:**

Mary Anning’s Curiosity by Monica Kulling & Melissa Castrillon.

Mary Anning and the Sea Dragon by Jeannine Atkins & Michael Dooling.

Dinosaur Lady: The Daring Discoveries of Mary Anning, the First Paleontologist by Linda Skeers & Marta Alvarez Miguens.